

CITY PACKAGES

NEW YORK

Your Package Includes...

2 NIGHTS Hotel and tax, plus:

PLAN 2A One selection from Group I
PLAN 2B One Broadway Show. Best available seating, but guaranteed to be in orchestra or front mezzanine.

3 NIGHTS Hotel and tax, plus:

PLAN 3A One from Group II • One Broadway Show • One from Group III
PLAN 3B Two Broadway Shows
PLAN 3C One Broadway Show • One from Group III • Stage Deli Lunch or Late Supper • One from Group IV
PLAN 3D Two from Group I • Two from Group III • Stage Deli Lunch or Late Supper • Two from Group IV

4 NIGHTS Hotel and tax, plus:

PLAN 4A One from Group II • One Broadway Show • Two from Group III • Stage Deli Lunch or Late Supper • American Museum of Natural History
PLAN 4B Three Broadway Shows
PLAN 4C Two Broadway Shows • One from Group III • Stage Deli Lunch or Late Supper
PLAN 4D One Broadway Show • Stage Deli Lunch or Late Supper • One from Group I • One from Group II • One from Group III • Four from Group IV

5 NIGHTS Hotel and tax, plus:

PLAN 5A Two Broadway Shows • One from Group I • One from Group II • Two from Group III • Three from Group IV
PLAN 5B Four Broadway Shows

7 NIGHTS Hotel and tax, plus:

PLAN 7A Four Broadway Shows • One from Group I • One from Group II • Four from Group III • Two from Group IV • Stage Deli Lunch or Late Supper
PLAN 7B Five Broadway Shows • Three Dinners • One from Group II • Stage Deli Lunch or Late Dinner

FEATURES GROUPS

BROADWAY SHOWS \$34pp) All Loops Tour PLUS
 ■ See description - next page
GROUP I - SIGHTS
 ■ Uptown Loop #UL
 ■ Downtown Loop #DL
 ■ Night Loop #NL
 ■ Holiday Lights Tour
 ■ Woodbury Shopping #WC
 ■ Sightseeing Cruise
 ■ Sunset/Harbor Lights Cruise
GROUP II - SIGHTS
 ■ All Loops Tour #AL - 48 hr. pass, Hop on/Hop off. See below to upgrade this tour!
GROUP II TOUR UPGRADE
ADD-ONS: Confirm at booking!
 •Add-On #1: Tour ALS (Add \$16 pp) All Loops Tour PLUS Statue of Liberty, Ellis Island
 •Add-On #2 Tour ENS: (Add \$34pp) All Loops Tour PLUS Statue of Liberty, Ellis Island, Empire State Building Admission
 •Add-On #3 Tour ENCT: (Add \$50pp) All Loops Tour PLUS Statue of Liberty, Ellis Island, Admission to United Nations, Top of the Rock (Rockefeller Center Observation Deck)
GROUP III - DINNERS
 ■ Tavern on the Green
 ■ Gallagher's ■ Sardi's
 ■ The View (atop Marriott)
GROUP IV - CULTURE
 ■ Metropolitan Museum of Art
 ■ Guggenheim Museum
 ■ American Museum of Natural History
 ■ Museum of Modern Art
 ■ Lincoln Center

SPECIAL HOLIDAY WEEKENDS

Packages for Thanksgiving, Shoppers Weekends and New Year's Eve - Please See Page 6.



Three Nights "Simply Sights" 3 NIGHTS Hotel and tax, plus:

Our Simply Sights three nighter is for those who only want hotel accommodations, plus a comprehensive tour of New York City, leaving time for personal activities. Extra nights are available.

PLAN 3S Comprehensive Manhattan Tour #MC. Fully escorted Gray Line tour includes: Upper and Lower Manhattan sights - the new Times Square, Empire State Building Madison Square Garden, Flatiron Building (the city's first skyscraper), Greenwich Village, SoHo, Little Italy, Battery Park where you will board the ferry and sail around the Statue of Liberty and Ellis Island. Resume tour at Battery Park and go up to Central Park, visit the Cathedral of St. John the Divine, Grant's Tomb, Harlem, Museum Mile, Fifth Avenue, Rockefeller Center and The United Nations. About 8½ hours. Includes lunch, narration, ferry ticket and admissions.

RATES PER PERSON	DATES	3 Nights - Plan 3S Simply Sights		
		HOTEL	CODE	SGL DBL TPL
BARCLAY INTERCONTINENTAL	L	\$1255	725	625
	H	1855	1029	849
CROWNE PLAZA BROADWAY	L	1495	845	685
	M	1595	889	725
DOUBLETREE GUEST SUITES	L	1499	845	675
	M	1909	1055	819
EDISON	L	995	599	509
	H	1119	669	549
HILTON TIMES SQUARE	L	1385	799	665
	M	1509	865	695
MARRIOTT MARQUIS	L	1545	875	695
	M	1909	1055	819
PARK CENTRAL	L	1325	759	605
	M	1625	899	719
WELLINGTON	L	1059	635	575
	H	1469	835	699

ROUNDTRIP AIRPORT TRANSFERS PER PERSON:
 JFK - \$40 LaGuardia - \$36 Newark - \$40

RATES PER PERSON	DATES	SEASON	2 NIGHTS PLAN 2A			2 NIGHTS PLAN 2B			3 NIGHTS 3A, 3B, 3C, 3D			4 NIGHTS 4A, 4B, 4C, 4D			5 NIGHTS PLAN 5A, 5B			7 NIGHTS PLAN 7A, 7B			EXTRA NIGHTS		
			HOTEL	CODE	SGL DBL TPL	SGL DBL TPL	SGL DBL TPL	SGL DBL TPL	SGL DBL TPL	SGL DBL TPL	SGL DBL TPL	SGL DBL TPL	SGL DBL TPL	SGL DBL TPL	SGL DBL TPL	SGL DBL TPL	SGL DBL TPL						
BARCLAY INTERCONTINENTAL*	1/2-8/24, 12/13-12/29	L	\$835	479	415	985	629	565	1585	1055	955	2149	1439	1309	2725	1849	1685	4049	2809	2585	350	175	145
	8/25-12/12	H	1239	689	565	1389	839	715	2189	1369	1189	2949	1855	1615	3735	2359	2055	5439	3509	3089	540	270	210
CROWNE PLAZA BROADWAY**	1/2-3/31, 7/1-9/7, 12/21-12/27	L	999	559	455	1149	709	605	1825	1169	999	2465	1599	1389	3109	2095	1775	4585	3079	2715	430	215	164
	4/1-6/30	M	1065	589	479	1215	739	629	1925	1219	1055	2595	1655	1435	3275	2099	1829	4799	3169	2775	462	231	174
	9/8-12/20	H	1365	745	579	1515	895	729	2349	1439	1199	3159	1949	1625	3979	2475	2065	5555	3665	2099	596	298	220
DOUBLETREE GUEST SUITES	1/1-2/28, 12/20-12/29	L	999	559	449	1149	709	599	1829	1179	1005	2455	1595	1375	3099	2019	1749	4545	3039	2675	426	213	158
	3/1-9/7	M	1279	699	555	1429	849	705	2239	1389	1149	2999	1875	1555	3795	2379	1975	5519	3545	2975	558	279	199
EDISON	9/8-12/19	H	1455	795	599	1605	945	749	2509	1525	1239	3369	2049	1675	4245	2599	2129	6145	3855	3189	640	320	227
	1/2-7/31	L	665	399	339	815	549	489	1325	935	845	1795	1275	1155	2285	1625	1475	3415	2489	2279	268	134	103
HILTON TIMES SQUARE***	8/1-12/29	H	735	445	369	885	595	519	1449	999	879	1969	1365	1199	2499	1745	1535	3735	2655	2365	318	159	116
	1/2-3/31, 7/1-9/3, 12/20-12/28	L	919	535	439	1069	685	589	1715	1135	995	2309	1545	1355	2929	1959	1729	4319	2955	2625	392	196	150
	4/1-6/30	M	999	575	465	1149	725	615	1845	1195	1025	2485	1625	1395	3139	2059	1779	4615	3095	2699	434	217	163
MARRIOTT MARQUIS	9/4-12/19	H	1349	745	585	1499	895	735	2339	1439	1205	3135	1939	1635	3949	2455	2065	5745	3645	3099	586	293	216
	1/2-3/31, 6/28-9/7, 12/13-12/28	L	1025	579	459	1175	729	609	1875	1209	1025	2525	1635	1395	3195	2079	1779	4685	3125	2725	442	221	165
	4/1-6/27	M	1279	699	555	1429	849	705	2239	1389	1149	2999	1875	1555	3795	2379	1975	5519	3545	2975	558	279	199
PARK CENTRAL	9/8-12/12	H	1455	795	599	1605	945	749	2509	1525	1239	3369	2049	1675	4245	2599	2129	6145	3855	3189	640	323	230
	1/1-3/31, 6/26-8/31, 12/18-12/29	L	885	499	399	1035	649	549	1655	1085	939	2235	1475	1285	2825	1889	1649	4169	2865	2519	370	185	136
	4/1-6/25	M	1089	599	479	1239	749	629	1959	1245	1049	2635	1685	1425	3325	2139	1815	4859	3209	2755	470	235	170
WELLINGTON	9/1-12/17	H	1225	675	529	1375	825	679	2149	1345	1129	2885	1809	1519	3629	2295	1935	5279	3425	2915	526	263	190
	1/1-3/31	L	699	425	385	849	575	535	1389	965	905	1879	1299	1235	2389	1675	1579	3565	2565	2435	288	144	126
	4/1-8/31	M	819	475	415	969	625	565	1559	1045	955	2099	1425	1299	2669	1815	1665	3955	2755	2549	342	171	144
WELLINGTON	9/1-12/29	H	979	555	465	1129	705	615	1799	1169	1035	2445	1589	1409	3095	1999	1799	4539	3049	2745	424	212	168

Season Codes: L= Low, M= Mid, H=High. Children under these ages are free in same room with parents: DoubleTree 13; Crowne Plaza 12; Hilton, Marriott, Park Central 18; Barclay Intercontinental 14, Edison and Wellington - no kids plan, triple or quad rate applies. Rates for features for children quoted at time of booking. Holiday season surcharges may apply during Nov. 20 - Dec. 31; rates quoted at booking. *Rates shown for Barclay are for stays that fall over Thu-Sun; for stays Mon-Wed, the following per person, per night surcharges will apply: 5/1-6/30 SGL \$190, DBL \$95, TPL \$70, QD \$50. Balance of the year: SGL \$70, DBL \$35, TPL \$24, QD \$18. The surcharge applies for both package nights and Extra Nights. **Rates shown for Crowne Plaza are for stays that fall over Fri-Sun nights; for stays Mon-Thu, the following per person, per night surcharges will apply for certain seasons; 4/1-6/30 - SGL \$86, DBL \$43, TPL \$29, QD \$22; 7/1-12/27 - SGL \$60, DBL \$30, TPL \$20, QD \$15. This surcharge applies for both package nights and Extra Nights. ***Rates shown for Hilton are for stays that fall over Fri-Sun; for stays Mon-Thu, the following per person, per night surcharges will apply all year; SGL \$90, DBL \$45, TPL \$30, QD \$23. This surcharge applies for both package nights and Extra Nights.

CITY PACKAGES

YOUR HOTELS



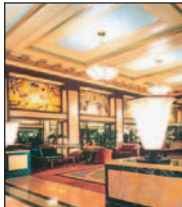
BARCLAY INTERCONTINENTAL
111 East 48th Street
All 686 luxurious guest rooms and suites are appointed with a wealth of modern amenities. Visit the United Nations, Wall Street, Broadway and close by Central Park. Dine at the hotel's Barclay Bar & Grill. State of the art fitness club.



CROWNE PLAZA BROADWAY
1605 Broadway at 49th
This 46-floor, 770-room tower in the theater district is three blocks from Rockefeller Center and Fifth Avenue. Guestrooms offer television Internet access. The hotel provides a health club with a sky-lit rooftop pool, sauna, and steam room.



DOUBLETREE GUEST SUITES
1568 Broadway
This all-suite hotel soars 45 floors above Times Square and the Theater District, and is in the most exciting part of New York. Walk to Radio City Music Hall, Rockefeller Center, Madison Square Garden, Central Park, museums and world-class shopping.



EDISON
228 West 47th Street
Built in 1931 in the same Art Deco style as Radio City Music Hall. Walking distance to Broadway theaters and Restaurant Row. On-site dining includes Sofia's Restaurant, The Supper Club, The Rum House, and Café Edison.



HILTON TIMES SQUARE
234 W 42nd Street
One block from Times Square, this hotel stands atop a retail and entertainment complex. 444 rooms with free high-speed Internet access. City to river views. Bronze sculptures are displayed in the 21st-floor Sky Lobby.



MARRIOTT MARQUIS
1535 Broadway
Broadway shows, Rockefeller Center, Radio City Music Hall, Carnegie Hall and Fifth Avenue are nearby. Enjoy the city's only revolving rooftop restaurant. In the heart of Times Square, a 37-story atrium, four restaurants, 2000 rooms with city views.



PARK CENTRAL
870 Seventh Avenue at 56th Street
Located in the core of New York City's most vibrant setting. This Midtown Manhattan hotel is just blocks from the Theater District, Central Park, and Rockefeller Center. Dine at Café New York, private health club and state-of-the-art business facilities.



WELLINGTON HOTEL
871 Seventh Avenue at 55th Street
This 27-story hotel offers a convenient Midtown location. About 20 Broadway theaters are within 10 blocks. Two restaurants, Molyvos and Park Cafe, gift shop, beauty salon, and room service (limited hours).

RESTAURANTS



TAVERN ON THE GREEN
Central Park at W. 67th Street
Built in 1870 to house sheep, the Tavern on the Green became a restaurant in 1934 and quickly became an integral part of New York life. Completely renovated and reopened in 1976, it is the place to "see and be seen." It hosts New York's most prestigious events – charity and political functions, Broadway show openings, and film premieres.



GALLAGHER'S - 228 W. 52nd Street
Since 1927, this former speakeasy-turned-steakhouse has packed in business people at lunch, and the Broadway crowd at night. The bustling wood-paneled dining room with red-checked tablecloths and photos of famous New Yorkers is inviting. Serving steaks, grilled over hickory logs, roast prime rib of beef and lamb chops, and clams, oysters and oxtail soup.



SARDI'S - 234 W. 44th Street
In the heart of the Theater District, Sardi's has been the toast of Broadway since 1921. Sketches of movie stars adorn the walls and add to the cozy atmosphere. A great place to eat before or after an evening at the theater. Open Tuesday through Sunday for lunch and dinner. Late supper is served Tuesday through Saturday.



THE VIEW (Atop the Marriott Marquis)
1535 Broadway
Located on the 47th floor, The View Restaurant/The View Lounge, New York City's only revolving rooftop restaurant and lounge, offers an all-encompassing dining experience. With spectacular 360-degree views and creative American-Continental cuisine, it appeals to visitors and New Yorkers alike. A prime spot for dining before and after theater. Perfect for groups, parties and that "special" occasion.

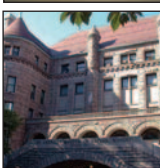
MUSEUMS/CULTURAL



METROPOLITAN MUSEUM OF ART
1000 5th Avenue
Open since 1872, the Museum's collection now contains more than two million works of art from all points of the compass, ancient through modern times. Considered to be the best in the world.



GUGGENHEIM - 1071 5th Avenue
This easily recognizable building is one of Frank Lloyd Wright's best-known masterpieces. It houses works by Chagall, Kandinsky, Thannhauser and many more. Modern art and sculptures are a predominant part of the vast collection.



AMERICAN MUSEUM OF NATURAL HISTORY - Central Park West & 79th St.
Delve into science and space with amazing exhibits. Hall of Planet Earth, Hall of the Universe & Cosmic Pathway, Hayden Planetarium. Rose Center Space shows narrated by Harrison Ford and Tom Hanks.



MUSEUM OF MODERN ART
11 West 53rd Street
THE modern contemporary art museum. The exhibits reflect the vitality, complexity and unfolding patterns of today's art. The museum also hosts a library, archives and conservation laboratory.



LINCOLN CENTER
Between West 62nd and 65th Streets & Columbus and Amsterdam Avenues
This 16-acre complex, the world's largest performing arts center, is home to 12 resident arts organizations including Julliard, NYC Ballet, NYC Opera, Philharmonic, The Metropolitan Opera and School of American Ballet.

TOP BROADWAY SHOWS

SHOWS MUST BE SELECTED AT TIME OF BOOKING
SEE PAGE 7 FOR SOME OF THE MOST POPULAR SHOWS

This is a partial list of shows we offer. Shows may close without notice. Packages include best available seating at time of booking, but **guaranteed to be Orchestra or Front Mezzanine!** Evening or matinee performances. Nominal surcharges may apply for some shows due to price differences and increases. Off-Broadway is also available.

9 to 5 • A Tale of Two Cities • Avenue Q • Equus Chicago • Billy Elliot • Hairspray • 13 • Grease In the Heights • Jersey Boys • Mamma Mia! Mary Poppins • Pal Joey • Shrek the Musical South Pacific • Spamalot • Spring Awakening The Lion King • White Christmas • The 39 Steps The Little Mermaid • All My Sons • The Seagull Wicked • American Buffalo • Young Frankenstein West Side Story • To Be or Not To Be • Gypsy The Phantom of the Opera • Dividing the Estate Speed-the-Plow • Xanadu • Boeing-Boeing August: Osage County • A Man for All Seasons

OPTIONAL SIGHTSEEING

Requires advance reservations at time of booking.

Niagara Falls by Air #NF: Adult or Child \$429. Daily, all year. (A fee will be charged if cancelled less than 8 days prior to the tour date.)

Manhattan Comprehensive with Lunch #MC: Adult \$89 Child \$65. Can be used to upgrade Group II Sightseeing. Add \$50 Adult/\$35 Child. Daily, all year.

Show Biz Insiders Tour #SI - Adult or Child \$69. Can be used to upgrade Group II Sightseeing. Add \$30 Adult or Child. Tue, Thu, Fri and Sat all year.

IMPORTANT INFORMATION

• **CHILDREN RATES** - See Rate Chart for ages at which children are free in room with parents in existing beds. Children's Features Rates available on request and will be quoted at time of booking.

• **CHRISTMAS SHOPPER'S SEASON** - Thanksgiving to December 31 is New York's busiest time. New York is aglow with the sights and sounds of the Holiday Season. Our packages are available over this period, but space is limited and Holiday Season surcharges apply. Prices and availability will be quoted at time of booking.

• **HOTEL CHECK-IN/CHECK-OUT** - Generally check-in is no earlier than 3:00pm and check-out by 12 noon. This is the policy of the hotels, not City Escape Holidays.

• **FEATURE SELECTIONS** - Selections from our multiple choice vouchers may be made after arrival, with the exception of shows and optional add-ons, which you must select at time of booking.

• **THEATRE POLICIES** - In case of package cancellation, we can sometimes refund the show ticket portion, if cancelled at least 30 days before show date. In some cases, especially with popular shows, theatres may impose fees, or full cost of ticket, if cancelled even up to 30 days before show date. We will advise theatres' policy if cancellation occurs.

• **EXTRA FEATURES** - Any item listed in the Features Groups can be purchased as Add-ons. Prices quoted at time of booking.

• **GROUP PACKAGES** - Your travel agent can book your group or organization on any of our packages. We can plan group activity functions, or prepare independent documents, so that each group member (or couple) can "do their own thing" after arrival.

• **ROOM ALLOCATIONS** - When City Escape Holiday's room allocations are sold out, often we secure additional rooms, but they may be at a higher rate, based on the hotel's capacity pricing policy. If this is the case, we will advise your travel agent at time of booking.

• **ROLLAWAYS** - Cost for rollaways is not included in packages rates. We suggest customers take care of this with the hotel directly.

Gray Line New York Sightseeing

Uptown Loop. Hop-on/Hop-off:

Stops include: Central Park, Lincoln Center, Theater District, Rockefeller Plaza, Radio City, Fifth Avenue, American Museum of Natural History, Cathedral of St. John the Divine, Apollo Theater, Harlem neighborhoods, Metropolitan Museum of Art, Guggenheim and other cultural points of Museum Mile.

Downtown Loop. Hop-on/Hop-off:

Stops include: Empire State Building, Greenwich Village, SoHo, Little Italy, Chinatown, Ground Zero, Financial District, Battery Park (departure point for Statue of Liberty & Ellis Island), South Street Seaport, Times Square, Rockefeller Plaza, Radio City, United Nations, Fifth Avenue and more.

Night Loop: NOT Hop-on/hop-off. Sights include: Times Square, Empire State Building, Greenwich Village, SoHo, Chinatown and Little Italy, See the glittering lights of the "City that never sleeps." Includes a stop in Brooklyn for great view of Manhattan.

Showbiz Insider's Tour: Go behind the scenes! This fully escorted 6-hour tour includes: Backstage tour at a top Broadway theater, Radio City Stage Door Tour, Lunch at Planet Hollywood, plus meet a Broadway performer! Tue, Thu, Fri & Sat. only.



Holiday Lights Tour: From November 23 to January 6 only. NOT Hop-on/hop-off. Similar to the Night Loop, but features animated window displays and holiday decorations at New York's famous department stores, plus the giant tree at Rockefeller Center and other unique holiday sights.

Woodbury Shopping Outlets: Unescorted. Includes roundtrip transportation to Woodbury's Premium Outlets and a VIP Coupon Booklet for additional discounts. Woodbury is designed in a village motif with indoor stores and restaurants, shuttle trolley and 220 designer stores.

All Loops (#AL): Hop-on/hop-off.

Offers the best sights in Manhattan with Hop-on/hop-off service at over 50 stops and connecting transfer points to switch from one tour loop to another. Combines the Uptown Loop, Downtown Loop and Night Loop.

All Loops PLUS Statue of Liberty (#ALS):

Includes All Loops, plus a boat ride to the Statue of Liberty and Ellis Island. Boat ride departs from Battery Park at the south tip of Manhattan every 20 minutes between 9:00am and 3:45pm in the spring, summer and autumn; less frequently in winter. Plan on four hours to visit Statue and Ellis Island.

Classic New York (#ENS):

Includes All Loops, Statue of Liberty/Ellis Island, PLUS admission to the Empire State Building Observation Deck. See #ALS Tour above.

Essential New York (#ENCT): Includes All Loops, plus Statue/Ellis Island, plus Top of the Rock Observation Deck, plus United Nations Tour admission. Top of the Rock is in the heart of Rockefeller Center and offers 360 degree views. United Nations tour is one hour. See #ALS Tour above.

Manhattan Comprehensive (#MC): See "Simply Sights" on page 4.

Holiday Season in New York

Thanksgiving - Arrive November 25, 2009

Shopper's Weekends - Arrive December 3, 2009 - #1 or Arrive December 10, 2009 - #2

New Year's Eve - Arrive December 29 or 30, 2009

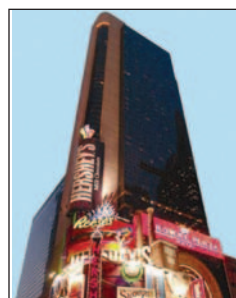
PLAN 3R INCLUDES: 3 nights accommodations and tax PLUS Rockettes Christmas Spectacular at Radio City Music Hall. For those who purchase the Thanksgiving package, you will be able to watch the famous Macy's Thanksgiving Day Parade from the sidewalk, right in front of the Crowne Plaza and Marriott Marquis; the Hilton and Barclay are close-by. Extra nights can be added.

RATES PER PERSON	THANKSGIVING			SHOPPER'S WEEKENDS			NEW YEAR'S EVE			
	Arrive Nov. 25			Arrive Dec. 3 or 10			Arrive Dec. 30			
HOTEL	SGL	DBL	TPL	SGL	DBL	TPL	SGL	DBL	TPL	
BARCLAY INTERNATIONAL	\$1995	1165	995	2695	1495	1215	ON REQUEST			
CROWNE PLAZA	2795	1495	1195	2795	1495	1195				
HILTON TIMES SQUARE	2295	1295	1055	2895	1595	1265				
MARRIOTT MARQUIS	2795	1495	1195	2795	1495	1195				

Note: All of our regular package plans 3A, 3B, 3C and 3D are available over the Holiday period (Nov 20-Jan1), based on a three-night minimum stay. Holiday season room surcharges apply and will be quoted at time of booking. Extra night rates are on request.



The Barclay International



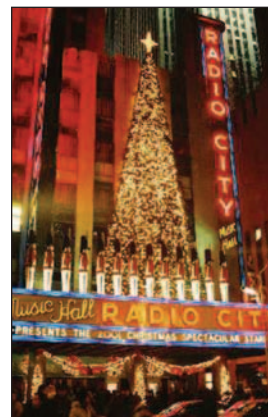
Crowne Plaza Broadway



Hilton Times Square



Marriott Marquis



CITY PACKAGES

CURRENT BROADWAY SHOWS

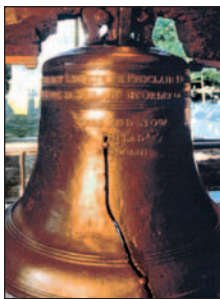


PHILADELPHIA

Your Package Includes...

2 NIGHTS Hotel and tax, plus:

PLAN 2A 90-minute fully-narrated Philadelphia Trolley Works tour of the city with on & off privileges, plus a 40-minute trip through Fairmont Park, home to many historic mansions, the Philadelphia Zoo and many other attractions.



RATES PER PERSON HOTEL	DATES	2 NIGHTS - 2A			EXTRA NIGHTS		
		SGL	DBL	TPL	SGL	DBL	TPL
CROWNE PLAZA	4/1-10/31	\$395	235	195	160	80	58

Effective Dates: 4/1-10/31 only. Children under 18 are free in same room with parents.

NIAGARA FALLS

Your Package Includes... **2 NIGHTS** Hotel and tax, plus:

PLAN 2A Gray Line Canadian Rainbow Tour #1 - Canadian side only. Includes Maid of the Mist cruise, Skylon Tower escalation, Imax Theater presentation, Daredevil Museum, Canadian Horseshoe Falls, Bridal Veil Falls, Upper Canadian and Upper Niagara Rapids, Power Plants, Sir Henry Oakes Garden, Whirlpool Rapids, Rainbow Bridge, and Queen Victoria Park. 5 hours.

RATES PER PERSON HOTEL - Both hotels on Canadian side	DATES	2 NIGHTS - 2A			EXTRA NIGHTS			
		SGL	DBL	TPL	SGL	DBL	TPL	
SHERATON ON THE FALLS City View Room	5/1-6/19, 10/12-10/31	L	\$475	309	279	164	82	65
	9/7-10/11	M	549	355	299	196	98	76
	6/20-9/6	H	665	415	345	252	126	95
SHERATON ON THE FALLS Falls View Room	5/1-6/19, 10/12-10/31	L	635	389	329	236	118	91
	9/7-10/11	M	749	449	369	288	144	108
	6/20-9/6	H	875	515	415	350	175	130
CROWNE PLAZA FALLSVIEW City View Room	5/1-6/19, 10/12-10/31	L	395	275	255	130	65	55
	9/7-10/11	M	495	325	289	168	84	68
	6/20-9/6	H	579	375	325	210	105	80
CROWNE PLAZA FALLSVIEW Falls View Room	5/1-6/19, 10/12-10/31	L	455	295	269	154	77	63
	9/7-10/11	M	635	395	335	240	120	90
	6/20-9/6	H	725	445	365	282	141	105

All rates are in US dollars. Effective Dates: 5/1-10/31 only. Season Codes: H=High, M=Medium, L=Low Children under 18 are free in same room with parents.